



Peters

REAL ESTATE



15 Rathluba Crescent East Maitland NSW

4 2 2

Magnificently nestled between breathtaking streetscapes in a prestigious location, this eminent homes spectacular dimensions showcase a flawless blend of elegance and functionality spread across an impressive 694sqm allotment.

The grand first impression created by a graceful facade is immediately matched by a series of unforgettable, flexible spaces that reflect a focus on lavish family living, meticulously crafted to cater to your ever-changing needs, ensuring a harmonious balance between open, airy spaces and cosy, intimate settings on each level.

Refined formal rooms beneath high ceilings set the tone for first floor spaces that include lounge and dining along with

[For full version visit the website](https://www.petersrealestate.com.au)

Type : House
Price : \$ 849,000
Land Size : 694 sqm
View : <https://www.petersrealestate.com.au/sale/nsw/hunter-valley-lower/east-maitland/residential/house/7596828>

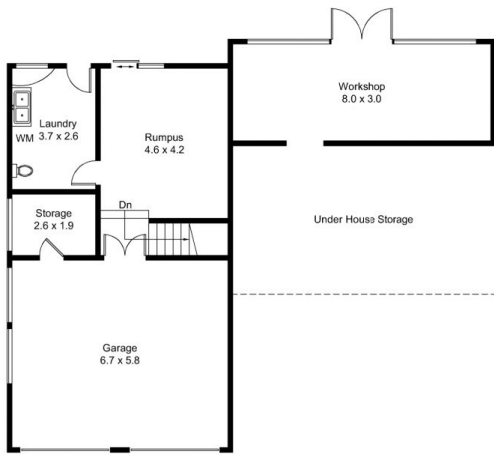


Lachlan Doyle
02 4933 7855

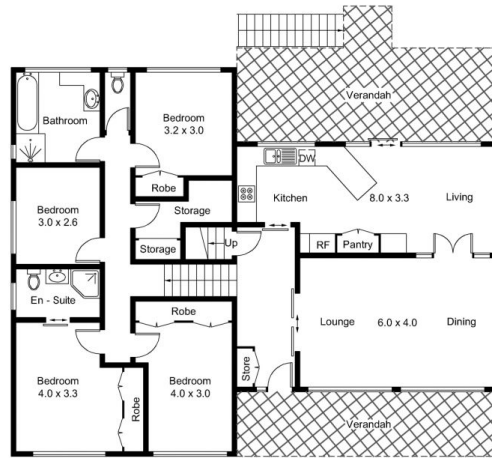


Aimee Burns
02 4933 7855

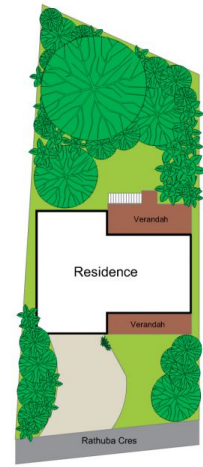
<https://www.petersrealestate.com.au>



Ground Floor = 103.7 Sq M



First Floor = 139.7 Sq M



(SITE PLAN NOT TO SCALE)



RF - 910W x 1710H
 Approximate Gross Internal Area = 243.4 sq m (Including Garage)