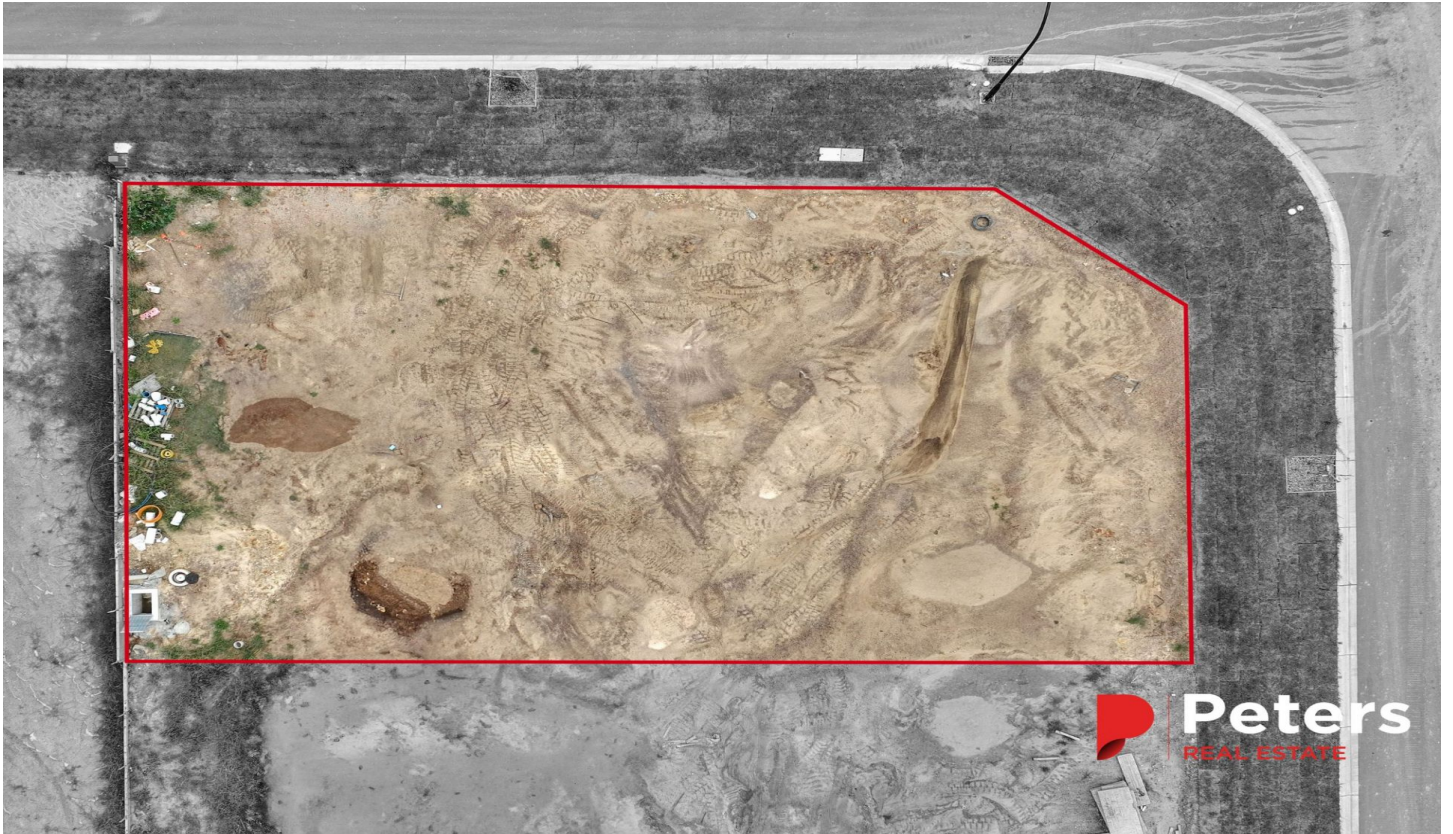




Peters

REAL ESTATE



Lot 906 Gillieston Valley Estate Gillieston Heights NSW

Set on a spacious 545sqm corner block, this property provides the perfect opportunity for a first home buyer or family to build their dream home or the savvy investor to make use of all the space on offer.

Located in the hub of Gillieston Heights, the property is conveniently located in short proximity to the shopping centre, parks and schooling.

Perfectly positioned within a short distance to the Hunter Expressway and the thriving communities of Maitland and Cessnock. A lifestyle of modern amenity & convenience in perfect balance is yours to enjoy.

Disclaimer: The information herein is collected from sources we trust to be dependable.

However, we cannot guarantee its accuracy, so it is

Price : \$389,000
Land Size : 545 sqm
View : <https://www.petersrealestate.com.au/sale/nsw/hunter-valley-lower/gillieston-heights/residential/land/7988114>



Jaide Van Wyck
4933 7855