

100 Louth Park Road South Maitland NSW

3  1  4 

Transformed by a sophisticated renovation, this three bedroom sanctuary rests amidst 4.4 acres (1.78ha) of rural tranquility just moments to the centre of Maitland.

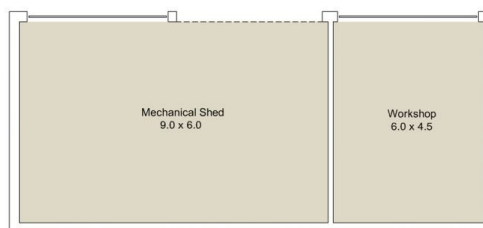
Arriving at the property, the serenity is instant and enchanting, with a long driveway past the formal timber entry gates beyond a line of jacarandas. A property that epitomises a harmonious fusion of design and nature, inviting you to a lifestyle where serenity takes centre stage. Come, experience the commanding presence and uncomplicated beauty that this unique home offers.

Quality craftsmanship and high-end fittings and fixtures are evident in every room of this much-loved home; echoing a bygone era of a grand country estate where accents of Edwardian interiors are used throughout the home from the grand entrance to the fireplaces. High ceilings, feature

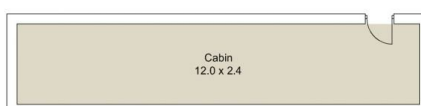
Price : \$1,500,000 - \$1,595,000
Land Size : 1.78 ha
View : <https://www.petersrealestate.com.au/sale/nsw/hunter-valley-lower/south-maitland/residential/house/8042493>



Adam Carruthers
 02 4933 7855



(Not Shown In Actual Location / Orientation)



(Not Shown In Actual Location / Orientation)



100 Louth Park Rd,
South Maitland



3 Bed



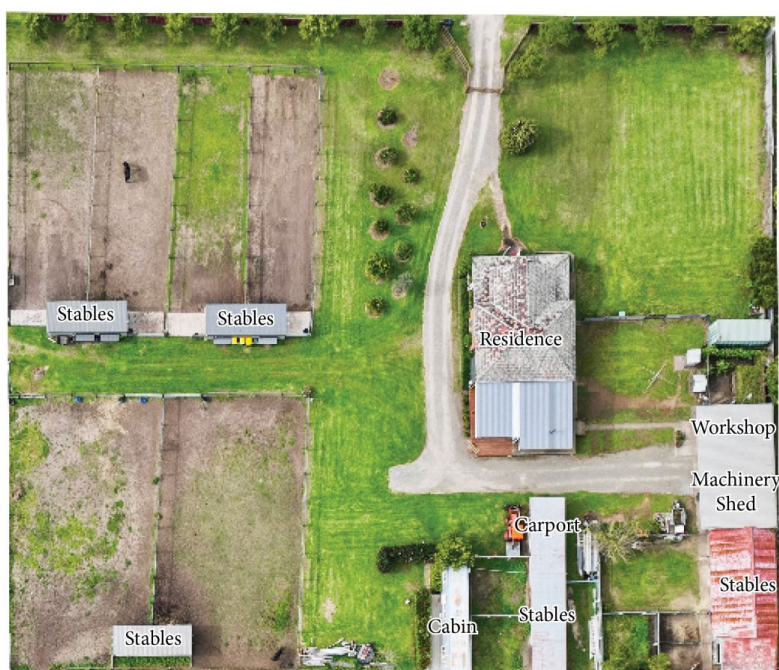
1 Bath



4 Car



Illustration for
identification
purposes only,
measurements are
approximate only
and not to scale



100 Louth Park Rd,
South Maitland



3 Bed



1 Bath



4 Car



Illustration for
identification
purposes only,
measurements are
approximate only
and not to scale